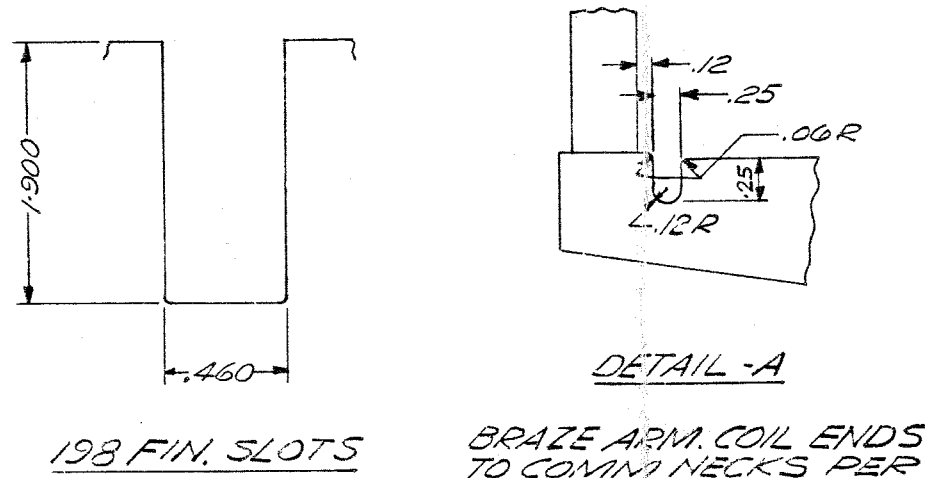


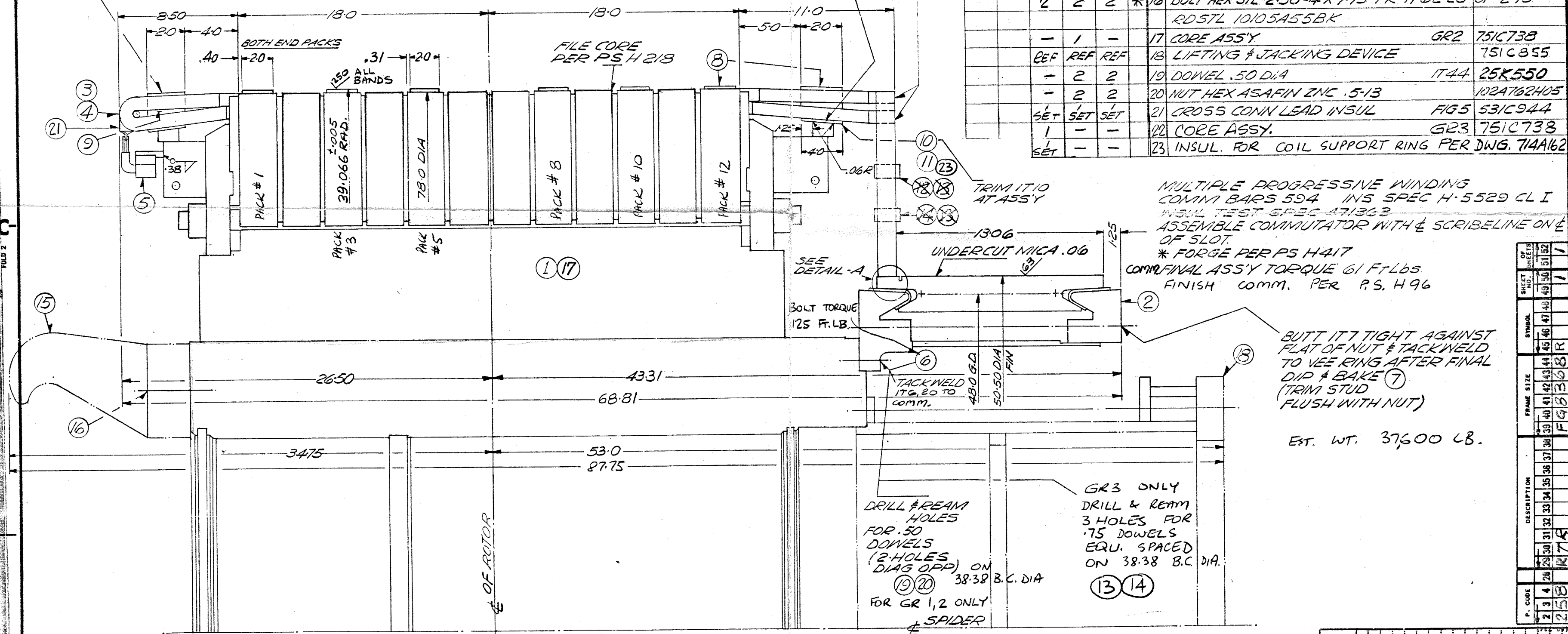
BANDING DETAILS				
	NO OF TURNS	PRELOAD	TAPE WIDTH	BANDING WIDTH
COIL FRONT & REAR	8	550	1.0	20
FGHG. PACKS <sup>13,3,8</sup> <sub>10,12</sub>	18	550	1.0	20



BRAZE ARM COIL ENDS TO COMM. NECKS PER PROC SPEC H-611

MACHINE FRONT & REAR COIL SUPPORTS TO SUIT COILS & INS IT 10 FOR GR1 & GR2 ONLY

BANDING PER PRO SPEC H-293162 (SEE ABOVE TABLE)



MANUFACTURING SYMBOL		ITEM	DESCRIPTION	IDENTIFICATION
GR 4	GR 3			
-	-	1	CORE ASS'Y	GR1 751C738
1	1	1	COMM ASS'Y	GR1 553B387
96	96	96	ARM COIL	GR1 751C730
102	102	102	ARM COIL (WITH DROP LEAD)	GR2 751C730
1	1	1	ROTOR CROSS COMM ASS'Y	GR2 548C355
6	6	6	BOLT HEX ZNCHR .625-11 X 2.75	100A604421
18	18	18	LOCKING PLATE FR .62 OF .125 X .50 FLSTL	10101865KM
1	1	1	BANDING FR 3600 FT OF .013 X 1.0 GLASS POLYESTER TAPE	4152487
SET	SET	SET	INSULATION BETWEEN COILS	FIG 8 531C944
28	28	28	INS SEG FR 4.0 X 36.0 OF .032 POLYESTER TAPE	44763A2
-	SET	SET	INS FOR COIL SUPPORT RING	FIG 11 531C944
-	350	350	COMM NECK SPACER	172 310A729
3	-	-	NUT HEX STL ZNCHR .75-10	102A762H08
3	-	-	DOWEL .75 DIA	1778 25K550
REF	REF	REF	LIFTING LUG	GR1 553B465
2	2	2	BOLT HEX STL 2.50-4 X 7.75 FR 11.62 LG OF 2.75 RD STL 10105A55BK	
-	1	-	CORE ASS'Y	GR2 751C738
REF	REF	REF	LIFTING & JACKING DEVICE	751C855
-	2	2	DOWEL .50 DIA	1744 25K550
-	2	2	NUT HEX ASAFIN ZNC .5-13	102A762H05
SET	SET	SET	CROSS COMM LEAD INSUL	FIG 5 531C944
1	-	-	CORE ASSY	GR3 751C738
SET	-	-	INSUL. FOR COIL SUPPORT RING PER DWG. 714A162	

MULTIPLE PROGRESSIVE WINDING COMM. BARS 594 INS SPEC H-5529 CL I INSUL TEST SPEC 471362 ASSEMBLE COMMUTATOR WITH & SCRIBELINE ON E OF SLOT. \* FORGE PER PS H417 COMM. FINAL ASSY TORQUE 61 FT LBS FINISH COMM. PER PS. H96

BUTT IT TIGHT AGAINST FLAT OF NUT & TACK WELD TO VEE RING AFTER FINAL DIP & BAKE (TRIM STUD FLUSH WITH NUT)

EST. WT. 37600 LB.

DRILL & REAM HOLES FOR .50 DOWELS (2 HOLES (DIAG OPP) ON 38.38 B.C. DIA) FOR GR 1,2 ONLY & SPIDER

GR3 ONLY DRILL & REAM 3 HOLES FOR .75 DOWELS EQU. SPACED ON 38.38 B.C. DIA.

ISSUE	NO.	DATE	DESCRIPTION
1	1-5-1231	1-5-1231	ISSUE
2	1-5-1231	1-5-1231	REVISED
3	1-5-1231	1-5-1231	REVISED
4	1-5-1231	1-5-1231	REVISED
5	1-5-1231	1-5-1231	REVISED

CANADIAN WESTINGHOUSE CO. LIMITED		HAMILTON - CANADA	
TITLE: DC MOTOR TYPE QL FR FG836-B			
ROTOR 55 ENG T/G DIVISION			
DIMENSIONS IN INCHES UNLESS OTHERWISE SPECIFIED		SCALE NTS	
FOR IMPLIED TOLERANCES SEE TGS 762			
DRAWN: WISHAW	DATE: 14 MAY 1905	APP. BY: [Signature]	DATE: 5-26-05
CHECKED: Gale	DATE: 5-27-05	APP. BY: R. Hamilton	DATE: 5-27-05
751C828			

REV.	DATE	DESCRIPTION	BY
1	1-5-1231	ISSUE	[Signature]
2	1-5-1231	REVISED	[Signature]
3	1-5-1231	REVISED	[Signature]
4	1-5-1231	REVISED	[Signature]
5	1-5-1231	REVISED	[Signature]