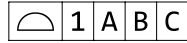

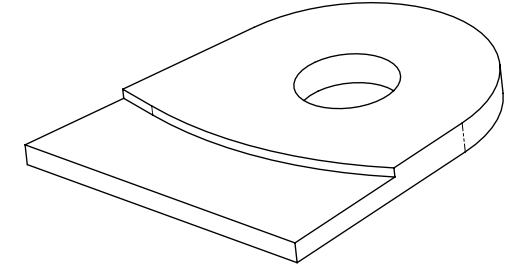


THIS DOCUMENT CONTAINS U.S. EXPORT-CONTROLLED INFORMATION (ITAR OR EAR). THE EXPORT, RE-EXPORT, TRANSFER OR RE-TRANSFER OF THIS DOCUMENT TO ANY OTHER COMPANY, ENTITY, PERSON, OR DESTINATION, OR FOR ANY USE OR PURPOSE OTHER THAN THAT FOR WHICH THE DOCUMENT WAS PROVIDED BY SPACEX IS PROHIBITED WITHOUT PRIOR WRITTEN APPROVAL FROM SPACEX AND AUTHORIZATION UNDER APPLICABLE EXPORT CONTROL LAWS. THIS DOCUMENT IS CONFIDENTIAL AND PROPRIETARY TO SPACEX.

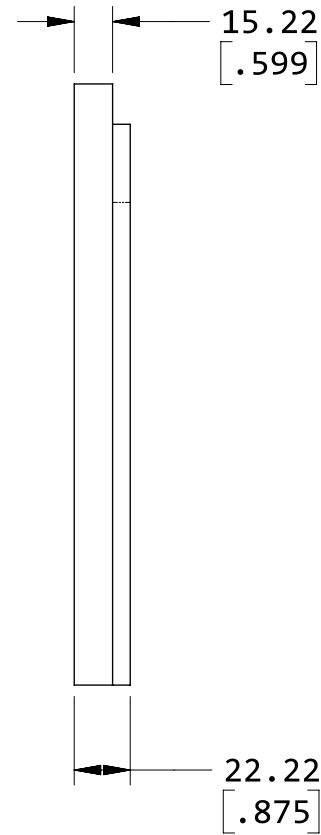
REVISIONS			
REV	DESCRIPTION	DATE	APPROVED
01	INITIAL RELEASE	23-AUG-2019	BCP

NOTES UNLESS OTHERWISE SPECIFIED:

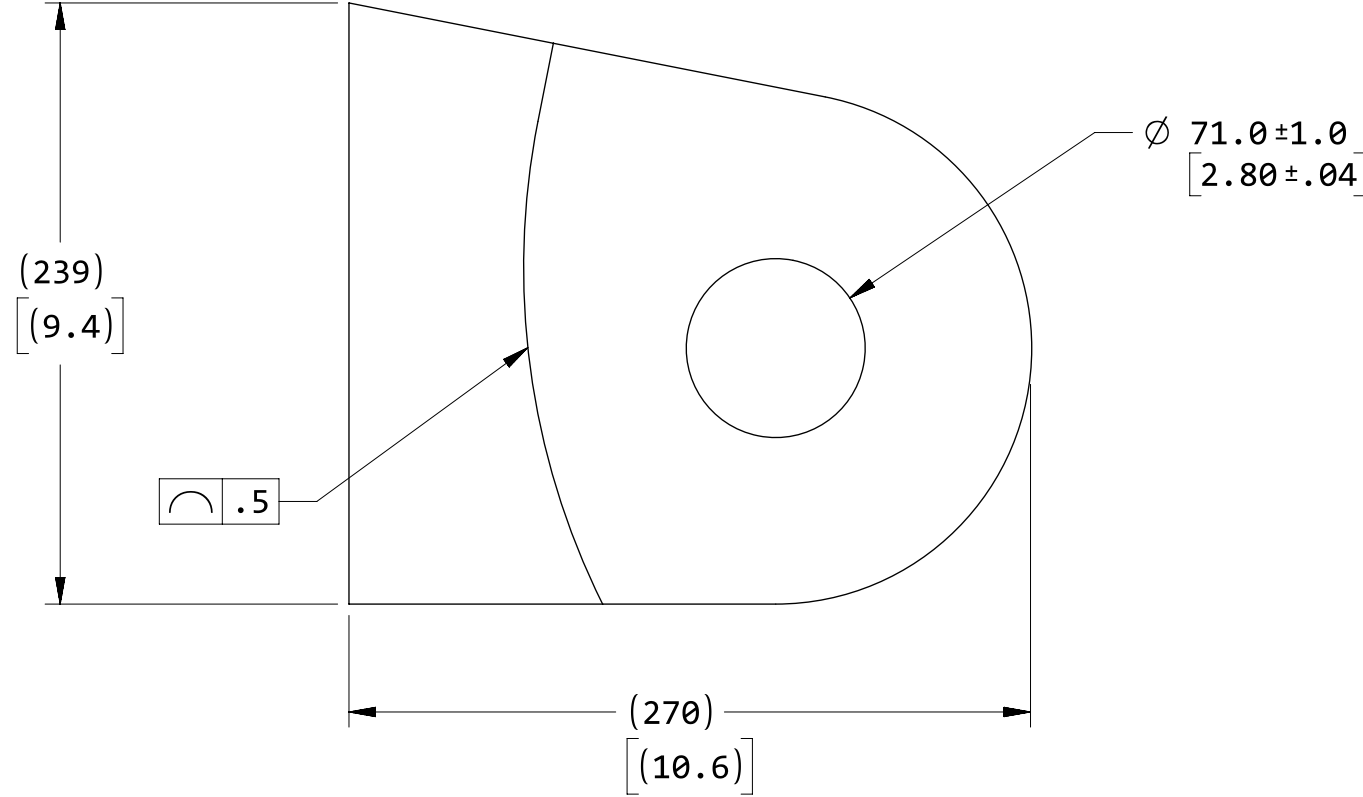
- THIS IS A MINIMAL DIMENSION DRAWING. THE CAD MODEL IS THE MASTER FOR ALL DIMENSIONS NOT SHOWN ON THE DRAWING. PART PROFILE  UNLESS OTHERWISE STATED.
- MATERIAL: STAINLESS STEEL ALLOY 304
CONDITION: ANNEALED
- FINISH: BARE.
-  IDENTIFY PART NUMBER, REVISION, AND SPACE WORK (OR PURCHASE) ORDER WITH BLACK SHARPIE OR EQUIVALENT PERMANENT MARKER.
- DRAWING IS DUAL DIMENSIONED. U.S. CUSTOMARY UNITS SHOWN IN BRACKETS [XX] ARE FOR REFERENCE ONLY.

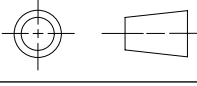


15.22
[.599]



22.22
[.875]



METRIC	UNLESS OTHERWISE SPECIFIED, ALL DIMENSIONS ARE IN MILLIMETERS DRAWING INTERPRETED PER ASME Y14.100-2000 DIMENSIONS INTERPRETED PER ASME Y14.5-2009	APPROVALS	DATE	SPACEX SPACE EXPLORATION TECHNOLOGIES 1 ROCKET ROAD HAWTHORNE, CA 90250 www.spacex.com
		DRAWN		
	REMOVE BURRS AND BREAK EDGES 0.1 - 0.4	CHECKED		DOCUMENT TITLE INNER LUG
	SURFACE TEXTURE: 3.2 MICROMETERS Ra MAX	ANALYSIS		
	TOLERANCES, UNLESS OTHERWISE SPECIFIED: LINEAR: X ± 2 X.X ± 0.5 X.XX ± 0.25 ANGULAR: X' ± 1' X.X' ± .1'	MANUFACTURING		SIZE B
		APPROVED		CAGE CODE 3BVL8
				DRAWING NUMBER 01364326-002
				REV 01
				DO NOT SCALE
				SHEET 1 OF 1

PART NO: 01364326-002