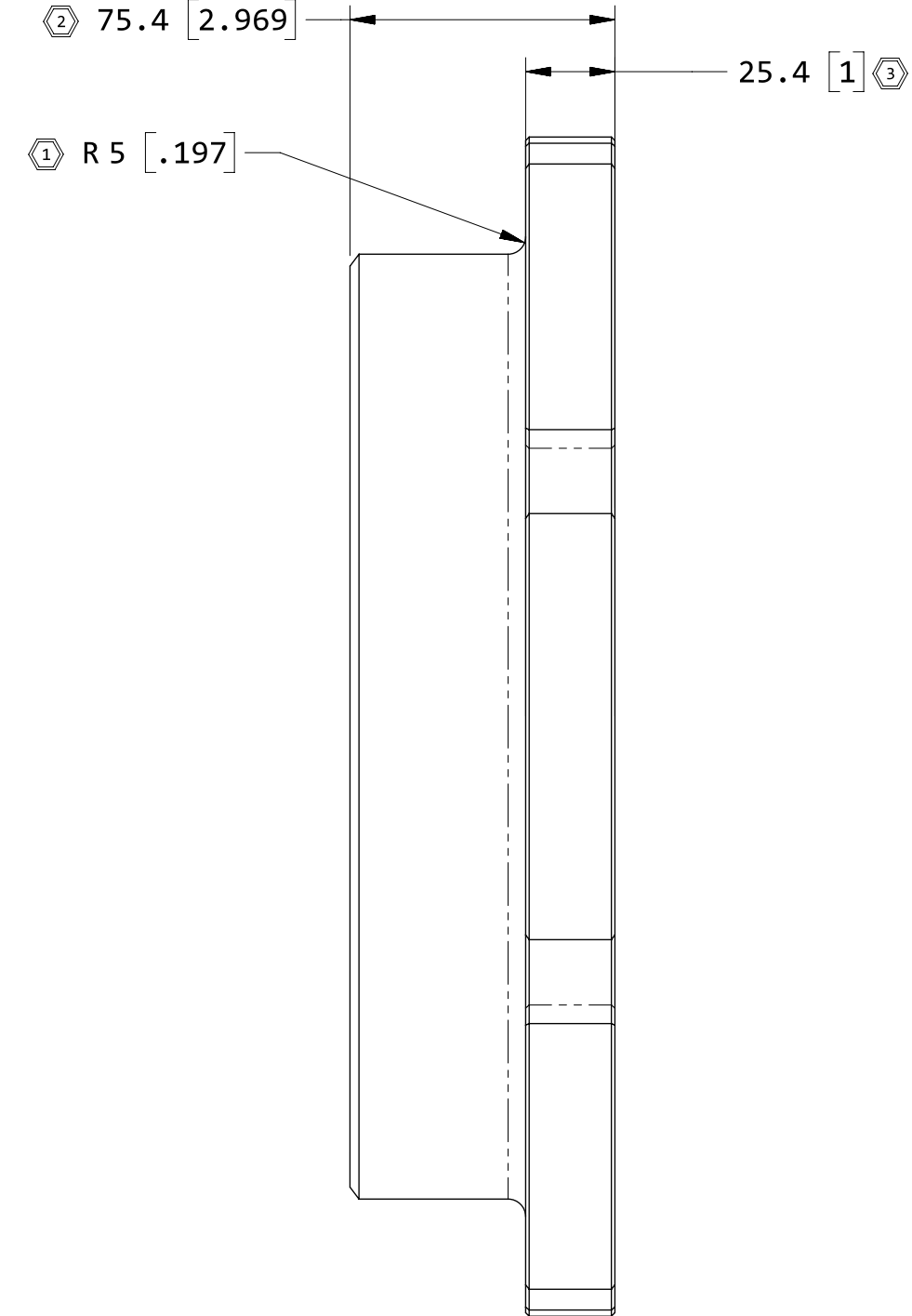
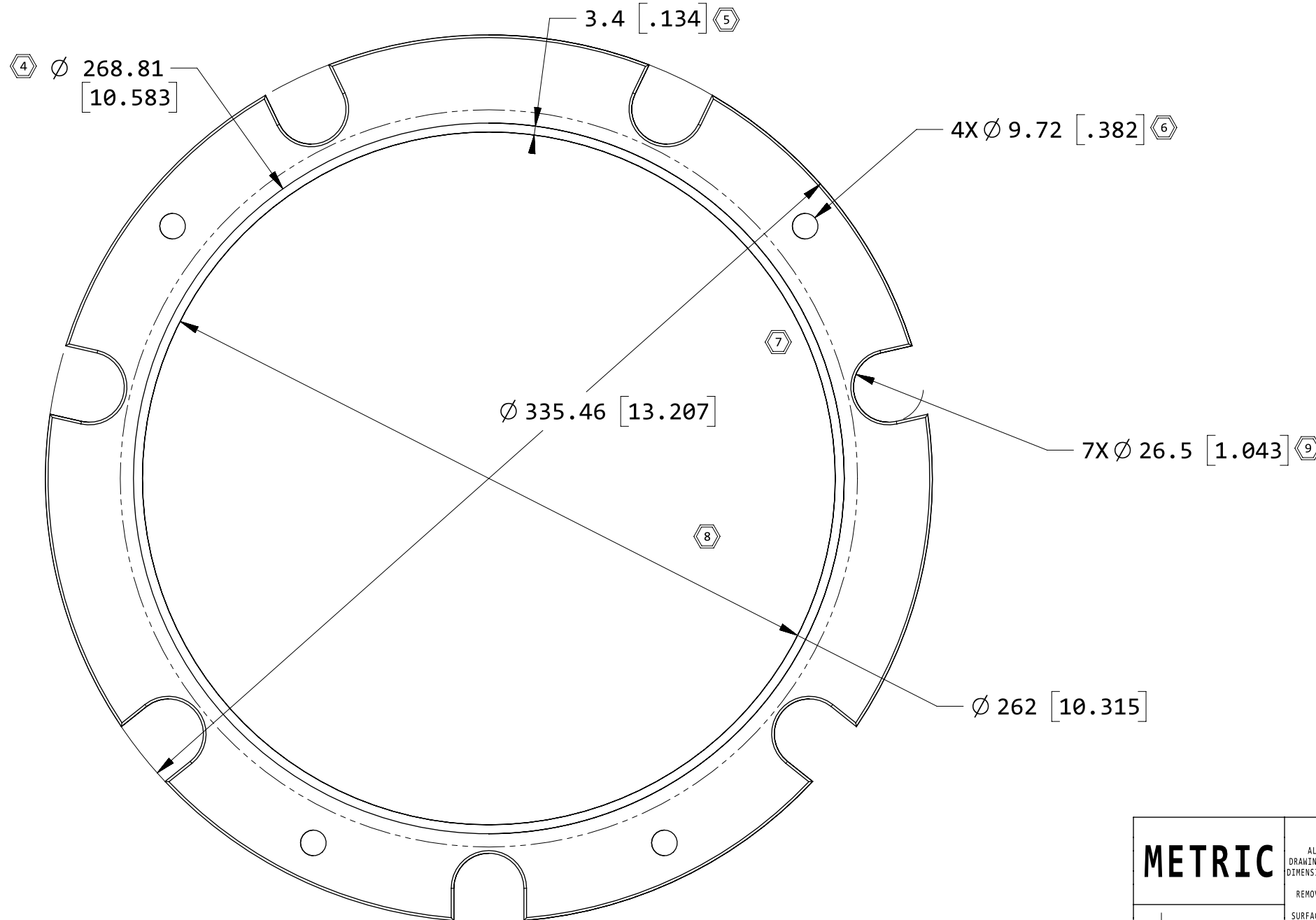


THIS DOCUMENT CONTAINS U.S. EXPORT-CONTROLLED INFORMATION (ITAR OR EAR). THE EXPORT, RE-EXPORT, TRANSFER OR RE-TRANSFER OF THIS DOCUMENT TO ANY OTHER COMPANY, ENTITY, PERSON, OR DESTINATION, OR FOR ANY USE OR PURPOSE OTHER THAN THAT FOR WHICH THE DOCUMENT WAS PROVIDED BY SPACEX IS PROHIBITED WITHOUT PRIOR WRITTEN APPROVAL FROM SPACEX AND AUTHORIZATION UNDER APPLICABLE EXPORT CONTROL LAWS. THIS DOCUMENT IS CONFIDENTIAL AND PROPRIETARY TO SPACEX.

REVISIONS			
REV	DESCRIPTION	DATE	APPROVED
XX	INITIAL RELEASE	DD-MMM-YYYY	XXX

NOTES UNLESS OTHERWISE SPECIFIED:

- 1 MATERIAL: 304L STAINLESS STEEL PER AMS 5647
- 2 IDENTIFY REQUIRED TRACE ATTRIBUTES AS LISTED IN THE ASSOCIATED PART MAINTENANCE RECORD PER AS478-3B1 (ENGRAVE)
- 3 THIS DRAWING CONTAINS DUAL DIMENSIONS. DIMENSIONS SHOWN IN BRACKETS [XX] ARE IN INCHES AND ARE FOR REFERENCE ONLY.
- 4 IDENTIFY PART NUMBER, REVISION, AND SPACEX WORK (OR PURCHASE) ORDER ID PER AS478-XX
- 5 FINISH: BARE



PART NO: 01550000-005

METRIC <small>UNLESS OTHERWISE SPECIFIED, ALL DIMENSIONS ARE IN MILLIMETERS DRAWING INTERPRETED PER ASME Y14.100-2000 DIMENSIONS INTERPRETED PER ASME Y14.5-2009</small>	APPROVALS	DATE	SPACE EXPLORATION TECHNOLOGIES 1 ROCKET ROAD HAWTHORNE, CA 90250 www.spacex.com	
	CHECKED			
<small>REMOVE BURRS AND BREAK EDGES 0.1 - 0.4 SURFACE TEXTURE: 3.2 MICROMETERS Ra MAX</small>	ANALYSIS		DOCUMENT TITLE MACHINED BUTTERFLY VALVE COVER	
<small>TOLERANCES, UNLESS OTHERWISE SPECIFIED: LINEAR: X ± 2 ANGULAR: X' ± 1' X.X ± 0.5 X.X' ± .1' X.XX ± 0.25</small>	MANUFACTURING		SIZE B	CAGE CODE 3BVL8
	APPROVED		DRAWING NUMBER 01550000-005	REV 01
			DO NOT SCALE	
			SHEET 1 OF 2	